





MXR
200L

ESPECIFICACIONES TÉCNICAS

- Motor 4 Tiempos enfriado por aire
- Cilindraje 193.2CC.
- Torque 14 NM a 6000 rpm.
- Velocidad máxima 80 Km/h
- Combustible gasolina regular..
- Transmisión 5 velocidades.
- Freno delantero disco ventilado.
- Tablero Digital
- Peso permitido 150 Kg.



 Rojo multicolor

 Negro multicolor

MRT
MotorRad Technk

ESTIMADO CLIENTE DE MASESA

Para nuestra organización es razón de satisfacción poder llevar hasta sus manos esta importante herramienta de trabajo.

La intención básica de facilitarle este útil catálogo, es compartir y ampliar el conocimiento que tenemos de los componentes que conforman nuestros modelos MRT.

Una vez alcanzado este objetivo, logramos tener la base necesaria para fortalecer y desarrollar nuestra capacidad de servir a nuestros clientes, razón primordial de nuestra existencia.

A través del uso de este instrumento, Masesa intenta inspirar y motiva un alto nivel de servicio y un auténtico interés por satisfacer los requerimientos de nuestros usuarios.

Con mucho orgullo, esfuerzo y trabajo, Masesa le deja en sus manos esta herramienta.

- 5 INDICE GRÁFICO**
- 8 CULATA Y CILINDRO**
Fig. -1
- 9 EJE DE LEVAS Y VALVULAS**
Fig. -2
- 10 CIGÜEÑAL, PISTON Y TRANSMISION**
Fig. -3
- 11 TAPA DE CARTER**
Fig. -4
- 12 CLUTCH, PLANTA Y MOTOR DE ARRANQUE**
Fig. -5
- 13 CARTER RH Y LH**
Fig. -6
- 14 CARTER, SILVIN, PIDEVIAS, TABLERO Y STOP**
Fig. -7
- 15 COBERTORES, TANQUE DE GASOLINA Y SILLON**
Fig. -8
- 16 COBERTORES, TANQUE DE GASOLINA Y SILLON**
Fig. -9
- 17 TREN DELANTERO**
Fig. -10
- 18 TREN DELANTERO Y SISTEMA ELECTRICO**
Fig. -11
- 19 CHASIS**
Fig. -12
- 20 MULETA Y MONOSHOCK**
Fig. -13
- 21 FILTRO DE AIRE, CARBURADOR Y ESCAPE**
Fig. -14
- 22 LLANTAS Y HERRAMIENTA**
Fig. -15
- 23 REFERENCIAS**
Fig. -16

FIG.1 CULATA Y CILINDRO

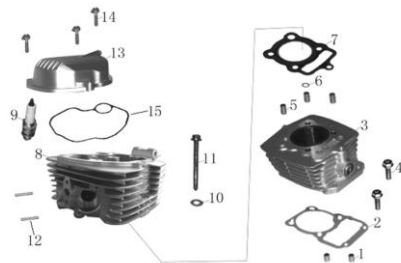


FIG. 2 EJE DE LEVAS Y VALVULAS



FIG. 3 CIGUEÑAL, PISTON Y TRANSMISION

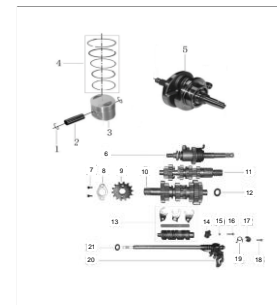


FIG. 4 TAPAS DE CARTER

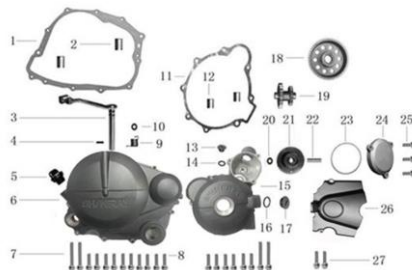


FIG. 5 CLUTCH, PLANTA Y MOTOR DE ARRANQUE

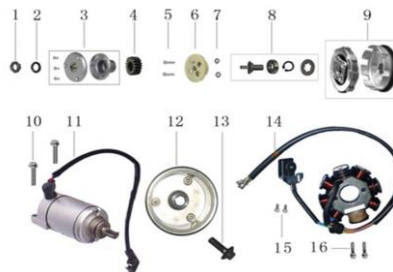
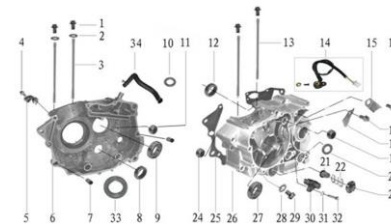
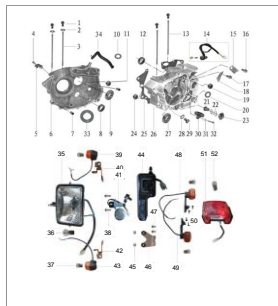


FIG. 6 CARTER RH Y LH



**FIG. 7 CARTERS, SILVIN,
PIDEVIAS, TABLERO Y STOP**



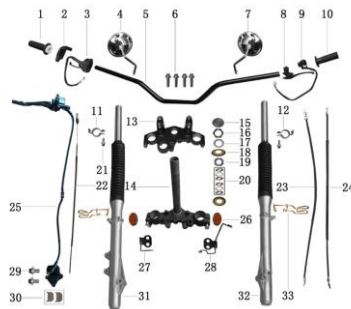
**FIG. 8 COBERTORES, TANQUE
DE GASOLINA Y SILLON**



**FIG. 9 COBERTORES, TANQUE
DE GASOLINA Y SILLON**



FIG. 10 TREN DELANTERO



**FIG. 11 TREN DELANTERO Y
SISTEMA ELECTRICO**

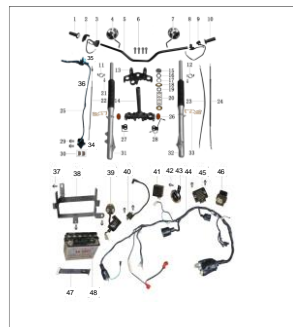


FIG. 12 CHASIS

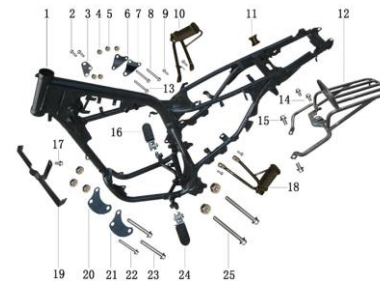


FIG.13 MULETA Y MONOSHOCK

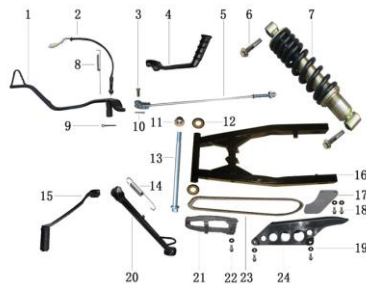


FIG. 14 FILTRO DE AIRE, CARBURADOR Y ESCAPE

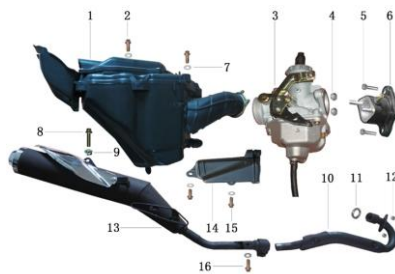


FIG. 15 LLANTAS Y HERRAMIENTA

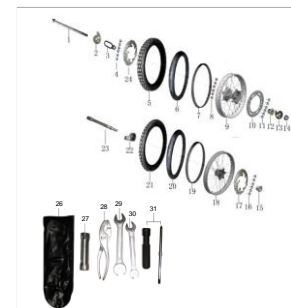


FIG. 16 REFERENCIAS

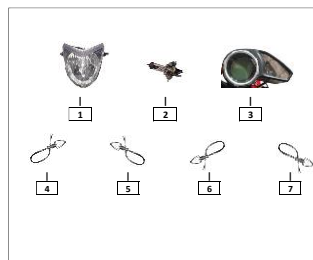
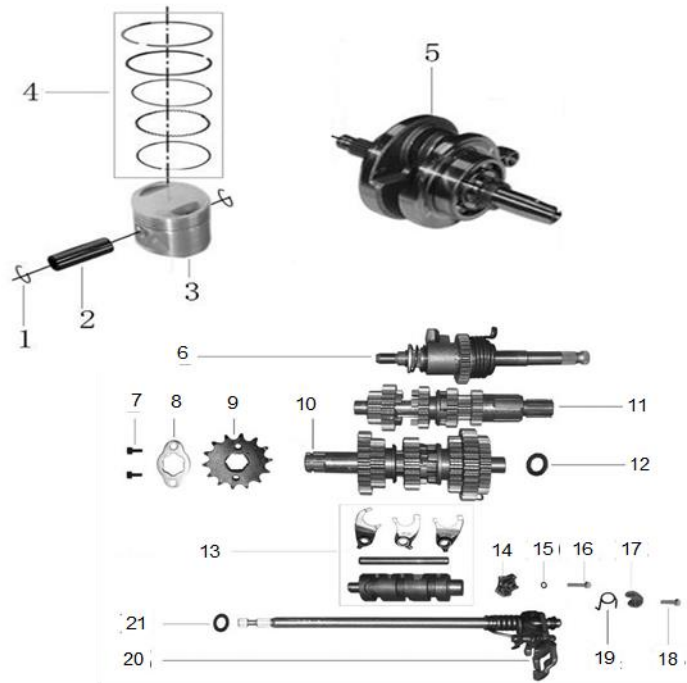


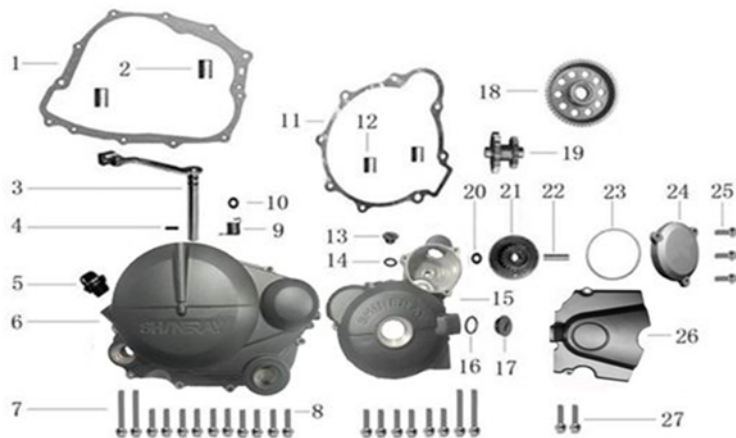
FIG. 2 EJE DE LEVAS Y VALVULAS



| NO. | ALTERNO | CÓDIGO | DESCRIPCION | CANT. | REF. |
|-----|---------|----------------|-------------------------|-------|------|
| 1 | - | MX034514154MT | VALVULA ADMISION | 1 | - |
| 2 | - | MX034514155MT | VALVULA ESCAPE | 1 | - |
| 3 | - | MX01012208MT | ORING DE VALVULA | 2 | - |
| 4 | - | MX034514149MT | ORING DE VALVULA | 2 | - |
| 5 | - | MX010199202MT | RESORTE INTERNO VALVULA | 2 | - |
| 6 | - | MX010199203MT | RESORTE | 2 | - |
| 7 | - | MX010199265MT | RETENEDOR DE VALVULAS | 2 | - |
| 8 | - | MX010199238MT | CUÑAS DE VALVULAS | 4 | - |
| 9 | - | MX010199237MT | GUIA DE VALVULA | 2 | - |
| 10 | - | MX010199188MT | BANCA DE BALANCINES | 1 | - |
| 11 | - | MXR200L02-11MT | ARANDELA M8x18.2 | 3 | - |
| 12 | - | MX010199199MT | TORNILLO M8x28 | 3 | - |
| 13 | - | MX034514158MT | BASE VARILLAS TIEMPO | 1 | - |
| 14 | - | MX01012209MT | VARILLAS DE TIEMPO | 2 | - |
| 15 | - | MX01012210MT | ORING | 1 | - |
| 16 | - | MX0101111647MT | ORQUETAS | 2 | - |
| 17 | - | MX010199211MT | ORING 18x2.5 | 1 | - |
| 18 | - | MX034514156MT | GUIA TENSOR CADENA | 1 | - |
| 19 | - | MX0101142484MT | ENGRANAJE DE TIEMPO | 1 | - |
| 20 | - | MX0101142485MT | ARANDELA | 1 | - |
| 21 | - | MX034514148MT | EJE ENGRANAJE DE TIEMPO | 1 | - |
| 22 | - | MX010199210MT | ORING 20x2.5 | 1 | - |
| 23 | - | MX010199204MT | RESORTE | 1 | - |
| | | | | | |
| | | | | | |
| | | | | | |
| | | | | | |
| | | | | | |
| | | | | | |
| | | | | | |
| | | | | | |
| | | | | | |
| | | | | | |



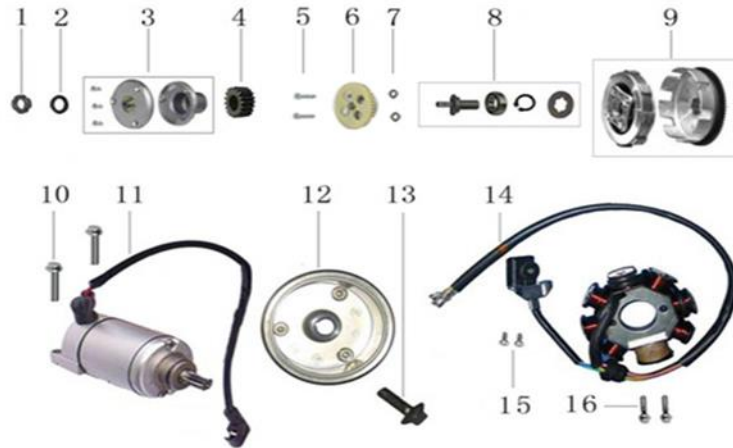
| NO. | AL TERNO | CÓDIGO | DESCRIPCION | CANT. | REF. |
|-----|----------|----------------|---------------------------------|-------|------|
| 1 | - | MX010310127MT | SEGURO PISTON | 2 | - |
| 2 | - | MX010314153MT | PASADOR PISTON | 1 | - |
| 3 | - | MX010314150MT | PISTON | 1 | - |
| 4 | - | MX010314152MT | ANILLOS PISTON | 1 | - |
| 5 | - | MX01042211MT | CIGÜEÑAL | 1 | - |
| 6 | - | MX010711353MT | EJE DE ARRANQUE | 1 | - |
| 7 | - | MX023522124MT | TORNILLO M6x 10 | 2 | - |
| 8 | - | MX0105991456MT | SEGURO DE SPROCKET | 1 | - |
| 9 | - | MX091314393MT | ESPROCKET DELANTERO 17 DIENTES | 1 | - |
| 10 | - | MX09122212MT | EJE DE ENGRANAJE COMPLETO | 1 | - |
| 11 | - | MX09122213MT | EJE PRINCIPAL | 1 | - |
| 12 | - | MXR200L04-07MT | ARNADELA DE ENGRANAJES | 1 | - |
| 13 | - | MX091211362MT | SELECTOR VELOCIDADES COMPLETO | 1 | - |
| 14 | - | MX095499373MT | ESTRELLA DE CAMBIOS | 1 | - |
| 15 | - | MX0549991180MT | ARANDELA 6 | 1 | - |
| 16 | - | MX010499962MT | TORNILLO M6x 25 | 1 | - |
| 17 | - | MX054910369MT | TOPE EJE VELOCIDADES | 1 | - |
| 18 | - | MX0102132038MT | TORNILLO M6x 22 | 1 | - |
| 19 | - | MX72120147MT | RESORTE SELECTOR DE VELOCIDADES | 1 | - |
| 20 | - | MX095499366MT | EJE DE VELOCIDADES | 1 | - |
| 21 | - | MX054910382MT | ARANDELA | 1 | - |



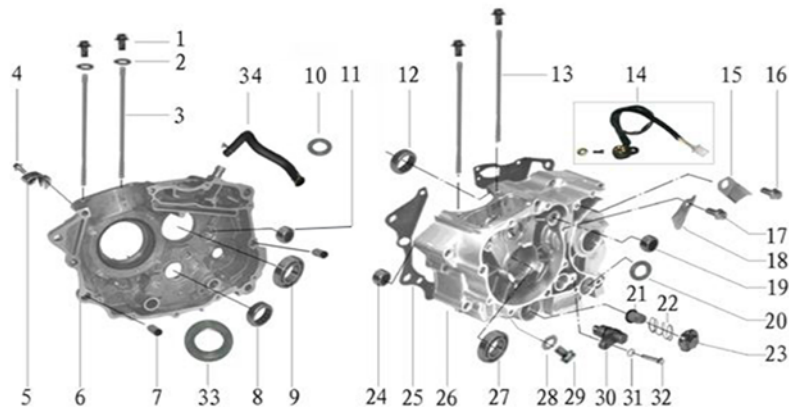
| NO. | ALTERNO | CÓDIGO | DESCRIPCION | CANT. | REF. |
|-----|---------|----------------|----------------------------|-------|------|
| 1 | - | MX010111207MT | EMPAQUE DE CLUTCH | 1 | - |
| 2 | - | MX0549991234MT | GUIAS EMPAQUE DE CARTER | 2 | - |
| 3 | - | MX010699490MT | EJE CLUTCH | 1 | - |
| 4 | - | MX023522143MT | PIN EJE DE CLUTCH | 1 | - |
| 5 | - | MX0110991293MT | TORNILLO NIVEL DE ACEITE | 1 | - |
| 6 | - | MX01052214MT | CUBIERTA DE CARTER | 1 | - |
| 7 | - | MX023522132MT | TORNILLO M6x50 | 4 | - |
| 8 | - | MXR200L05-08MT | TORNILLO M6x40 | 15 | - |
| 9 | - | MX0549991264MT | PIN | 1 | - |
| 10 | - | MXR200L05-10MT | ARANDELA | 1 | - |
| 11 | - | MX01052215MT | EMPAQUE TAPADERA DE PLANTA | 1 | - |
| 12 | - | MX0105991233MT | GUIA DE EMPAQUES 10x14 | 2 | - |
| 13 | - | MX091299342MT | ENGRANAJE LOCO | 1 | - |
| 14 | - | MX0107991282MT | ORING 13.2x2.5 | 1 | - |
| 15 | - | MX054910342MT | TAPADERA DE PLANTA | 1 | - |
| 16 | - | MX0549991279MT | ORING 27.4x2.65 | 1 | - |
| 17 | - | MX054910341MT | TAPON DE TUERCA DE MAGNETO | 1 | - |
| 18 | - | MX010714376MT | ENGRANAJE CLUTCH | 1 | - |
| 19 | - | MX0107141757MT | ENGRANAJE DOBLE | 1 | - |
| 20 | - | MX010414885MT | COJINETE DE AGUJAS HK1010 | 1 | - |
| 21 | - | MX01072216MT | ENGRANAJE DOBLE ESTARTER | 1 | - |
| 22 | - | MX01052219MT | EJE DE ENGRANAJE | 1 | - |
| 23 | - | MX72150209MT | ORING | 1 | - |
| 24 | - | MX01052217MT | TAPADERA DE ARO | 1 | - |
| 25 | - | MX023522130MT | TORNILLO M6x12 | 3 | - |
| 26 | - | MX01052218MT | TAPADERA DE SPROCKET | 1 | - |
| 27 | - | MX054910985MT | TORNILLO M6x25 | 2 | - |
| | | | | | |
| | | | | | |
| | | | | | |

FIG. 5

CLUTCH, PLANTA Y MOTOR DE ESTARTER

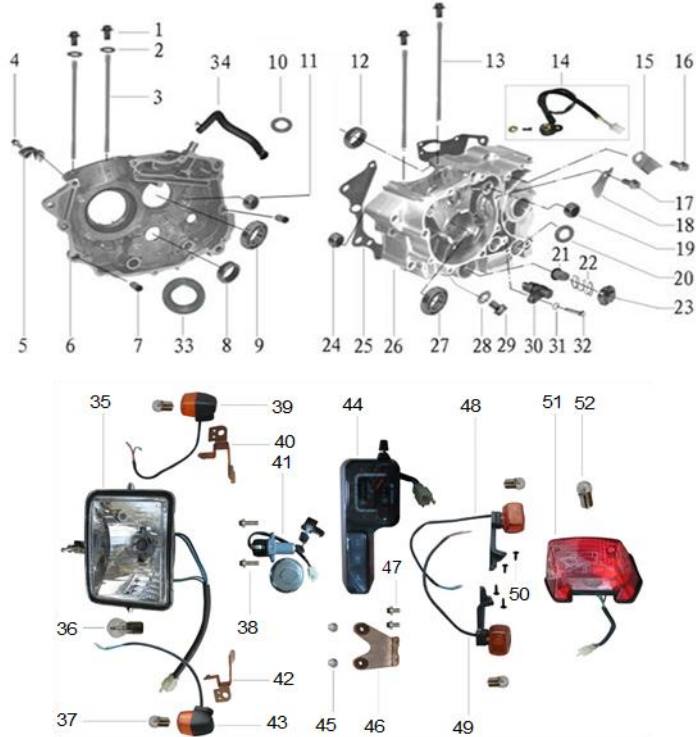


| NO. | ALTERNO | CÓDIGO | DESCRIPCION | CANT. | REF. |
|-----|---------|----------------|--------------------------------------|-------|------|
| 1 | - | MX010714567MT | TUERCA | 1 | - |
| 2 | - | MX0549991196MT | ARANDELA | 1 | - |
| 3 | - | MX01042219MT | FILTRO CENTRIFUGO | 1 | - |
| 4 | - | MX091299483MT | ENGRANAJE | 1 | - |
| 5 | - | MX0549101132MT | TORNILLO M6X30 | 2 | - |
| 6 | - | MX0101991282MT | BOMBA DE ACEITE | 1 | - |
| 7 | - | MX0101991281MT | ORING 9.4x2.4 | 2 | - |
| 8 | - | MX010610511MT | TOPES CLUTCH (2 TOPES, COJINETE 6001 | 1 | - |
| 9 | - | MX01062220MT | CANASTA CLUTCH COMPLETA | 1 | - |
| 10 | - | MXR200L06-10MT | TORNILLOS DE ESTARTER | 2 | - |
| 11 | - | MX01072221MT | MOTOR DE ARRANQUE | 1 | - |
| 12 | - | MX01072222MT | VOLANTE & CLUTCH STARTER | 1 | - |
| 13 | - | MX054999964MT | TORNILLO | 1 | - |
| 14 | - | MX010714566MT | PLANTA COMPLETA 8 BOBINAS | 1 | - |
| 15 | - | MX054911918MT | TORNILLO M5x16 | 2 | - |
| 16 | - | MX054999963MT | TORNILLOS DE PLANTA | 2 | - |
| | | | | | |
| | | | | | |
| | | | | | |
| | | | | | |
| | | | | | |
| | | | | | |
| | | | | | |
| | | | | | |
| | | | | | |
| | | | | | |
| | | | | | |
| | | | | | |
| | | | | | |
| | | | | | |
| | | | | | |
| | | | | | |
| | | | | | |
| | | | | | |
| | | | | | |
| | | | | | |
| | | | | | |
| | | | | | |
| | | | | | |
| | | | | | |
| | | | | | |
| | | | | | |
| | | | | | |
| | | | | | |



| NO. | ALTERNO | CÓDIGO | DESCRIPCION | CANT. | REF. |
|-----|---------|--------------------|--------------------------------------|-------|------|
| 1 | - | MX0549991081M T | TUERCA M8x32 | 4 | - |
| 2 | - | MX0549991184M T | ARANDELA 12.5x22x2 | 4 | - |
| 3 | - | MX054999986M T | ESPARRAGO DE CILINDRO A M8x144 | 2 | - |
| 4 | - | MXR200L07-04M T | TORNILLO M6x50 | 1 | - |
| 5 | - | MX01052228M T | BASE DE CABLE | 1 | - |
| 6 | - | MX01052223M T | CARTER RH | 1 | - |
| 7 | - | MX0105991233M T | GUIA DE EMPAQUES 10x14 | 2 | - |
| 8 | - | MX01052224M T | COJINETES DE AGUJAS | 1 | - |
| 9 | - | MX010499882M T | COJINETE 6006 | 1 | - |
| 10 | - | MX010510128M T | RETENEDOR 16x28x7 | 1 | - |
| 11 | - | MX010499886M T | COJINETE DE AGUJAS NK1512 | 1 | - |
| 12 | - | MX01052225M T | SELLO DE ACEITE 14x22x5 | 1 | - |
| 13 | - | MX054999987M T | ESPARRAGO DE CILINDRO B M8x138 | 2 | - |
| 14 | - | MX010411313M T | SENSOR DE VELOCIDAD | 1 | - |
| 15 | - | MX0105111457M T | GUIA DE CABLES MAGNETO | 1 | - |
| 16 | - | MXR200L07-16M T | TORNILLO M6x12 | 1 | - |
| 17 | - | MXR200L07-17M T | TORNILLO M6x12 | 1 | - |
| 18 | - | MX010199212M T | ORQUETA ADMISION | 1 | - |
| 19 | - | MX010414885M T | COJINETE DE AGUJAS HK1010 | 1 | - |
| 20 | - | MX095410129M T | RETENEDOR EJE DE VELOCIDADES 14x28x7 | 1 | - |
| 21 | - | MX010699319M T | FILTRO DE ACEITE DE CEDAZO | 1 | - |
| 22 | - | MX010108249M T M T | RESORTE | 1 | - |
| 23 | - | MX010108248M T | TAPADERA DE VALVULAS | 1 | - |
| 24 | - | MX010499881M T | COJINETE 6202 | 1 | - |
| 25 | - | MX01052226M T | EMPAQUE DE CARTER | 1 | - |
| 26 | - | MX01052227M T | CARTER LH | 1 | - |
| 27 | - | MX010499880M T | COJINETE 6204 | 1 | - |
| 28 | - | MX023522141M T | ARANDELA | 1 | - |
| 29 | - | MXR200L07-29M T | TORNILLO | 1 | - |
| 30 | - | MX010514320M T | PIN PRESION | 1 | - |
| 31 | - | MX010514322M T | ARANDELA | 1 | - |

CARTERS, SILVIN, PIDEVIAS, TABLERO Y STOP



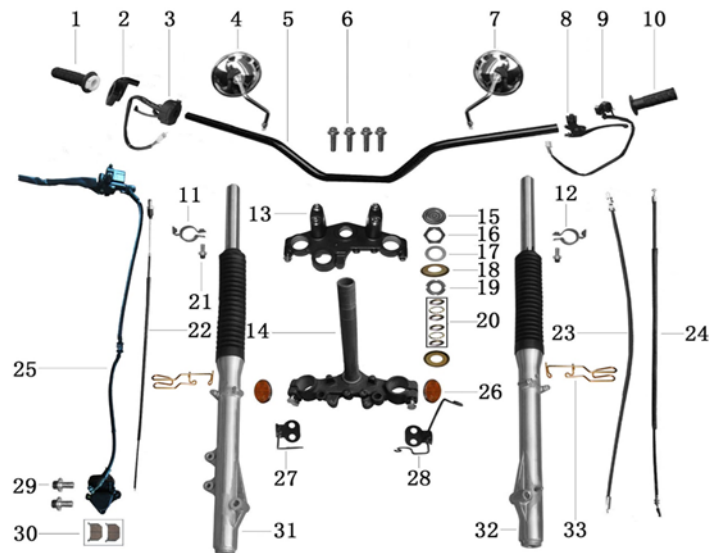
| NO. | ALTERNO | CÓDIGO | DESCRIPCION | CANT. | REF. |
|-----|---------|----------------|------------------------|-------|----------------|
| 32 | - | MXR200L07-32MT | TORNILLO M6x25 | 1 | - |
| 33 | - | MX010514323MT | RETENEDOR DE CARTER | 1 | - |
| 34 | - | MX010522114MT | CARTER LH | 1 | - |
| 35 | - | MX02292228MT | SILVIN | 1 | MXR200L18-01MT |
| 36 | - | MX062708280MT | BOMBILLA DE SILVIN | 1 | MXR200L18-02MT |
| 37 | - | MX071608283MT | BOMBILLA DE PIDEVIAS | 4 | - |
| 38 | - | MX023522127MT | TORNILLO DE SWITCH | 2 | - |
| 39 | - | MX02402229MT | PIDEVIAS RH | 1 | MXR200L18-04MT |
| 40 | - | MX02402230MT | BASE DE PIDEVIAS RH | 1 | - |
| 41 | - | MX07152231MT | KIT DE SWITCH | 1 | - |
| 42 | - | MX02402232MT | BASE DE PIDEVIAS LH | 1 | - |
| 43 | - | MX02402233MT | PIDEVIAS LH | 1 | MXR200L18-05MT |
| 44 | - | MX02322234MT | ASPIROMETRO COMPLETO | 1 | MXR200L18-03MT |
| 45 | - | MX0102132024MT | TUERCA M6 | 2 | - |
| 46 | - | MX02412235MT | SOPORTE DE ASPIROMETRO | 1 | - |
| 47 | - | MX05499928MT | TORNILLO M6x12 | 2 | - |
| 48 | - | MX02402236MT | PIDEVIAS TRASERO RH | 1 | MXR200L18-06MT |
| 49 | - | MX02402237MT | PIDEVIAS TRASERO LH | 1 | MXR200L18-07MT |
| 50 | - | MX0549101124MT | TORNILLO 4.2x17 | 4 | - |
| 51 | - | MX02372238MT | STOP COMPLETO | 1 | - |
| 52 | - | MX024010115MT | BOMBILLA STOP | 1 | - |
| | | | | | |
| | | | | | |
| | | | | | |
| | | | | | |
| | | | | | |
| | | | | | |
| | | | | | |
| | | | | | |
| | | | | | |
| | | | | | |
| | | | | | |
| | | | | | |



| NO. | ALTERNO | CÓDIGO | DESCRIPCION | CANT. | REF. |
|------|---------|------------------|-------------------------------------|-------|------|
| 1 | - | MX10512239MT | COBERTOR PRINCIPAL DE SILVIN BLANCO | 1 | - |
| 1 | - | MX10512240MT | COBERTOR DE SILVIN | 1 | - |
| 2 | - | MX02302242MT | HULES DE TANQUE | 2 | - |
| 3 | - | MX02302241MT | TANQUE DE COMBUSTIBLE | 1 | - |
| 4 | - | MX10512242MT | COBERTOR DE TANQUE DERECHO ROJO | 1 | - |
| 4.1 | - | MX10512243MT | COBERTOR DE TANQUE DERECHO NEGRO | 1 | - |
| 5 | - | MX10512257MT | TORNILLO | 6 | - |
| 6 | - | MX105123121MT | HULE | 4 | - |
| 7 | - | MX10512244MT | COBERTOR LATERAL DERECHO NEGRO | 1 | - |
| 8 | - | MX023522140MT | TORNILLO | 6 | - |
| 9 | - | MX10512245MT | COBERTOR TRASERO DERECHO BLANCO | 1 | - |
| 9.1 | - | MX10512246MT | COBERTOR TRASERO DERECHO NEGRO | 1 | - |
| 10 | - | MX10512247MT | TAPADERA DE COLA BLANCA | 1 | - |
| 10.1 | - | MX10512248MT | TAPADERA DE COLA NEGRA | 1 | - |
| 11 | - | MX10512258MT | ARANDELA | 8 | - |
| 12 | - | MX10512255MT | ARANDELA | 4 | - |
| 13 | - | MX10512249MT | LODERA DELANTERA ROJA | 1 | - |
| 13.1 | - | MX10512250MT | LODERA DELANTERA NEGRA | 1 | - |
| 14 | - | MX105123120MT | BUSHING DE TORNILLO LODERA | 4 | - |
| 15 | - | MXR200L09-15M T | TORNILLO M6x20 | 4 | - |
| 16 | - | MX10512251MT | TAPADERA DE TANQUE LH NEGRA | 1 | - |
| 16.1 | - | MX10512252MT | COBERTOR TANQUE LH ROJO | 1 | - |
| 17 | - | MX023011411MT | LLAVE DE GASOLINA | 1 | - |
| 18 | - | MX054999928MT | TORNILLO M6x12 | 2 | - |
| 19 | - | MX10512253MT | TAPADERA LATERAL LH | 1 | - |
| 20 | - | MX10512254MT | COBERTOR TRASERO LH BLANCO | 1 | - |
| 20.1 | - | MXR200L09-2001MT | COBERTOR | 1 | - |
| 21 | - | MX023522139MT | TORNILLO | 2 | - |
| 22 | - | MX054910942MT | TORNILLO | 1 | - |
| 23 | - | MX0549111318M T | BUSHING DE TANQUE | 1 | - |
| 24 | - | MX0549111318M T | HULE DE TANQUE | 1 | - |

FIG. 9**COBERTORES, TANQUE DE GASOLINA Y SILLON**

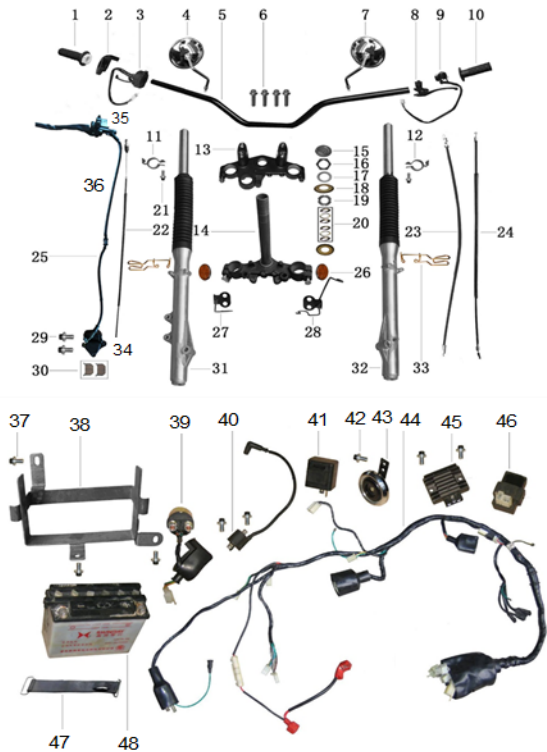
| NO. | ALTERNO | CÓDIGO | DESCRIPCION | CANT. | REF. |
|-----|---------|----------------|------------------------|-------|------|
| 25 | - | MX02392255MT | SILLON TRASERO | 1 | - |
| 26 | - | MX0549101099MT | TUERCA M6 | 2 | - |
| 27 | - | MX023522131MT | TORNILLO | 2 | - |
| 28 | - | MX0549111479MT | BASE DE PLACA | 1 | - |
| 29 | - | MX10512256MT | LODERA TRASERA | 1 | - |
| 30 | - | MX105122113MT | BASE DE SILVIN INTERNA | 1 | - |
| 31 | - | MX105122114MT | KEIS DE SILVIN RH | 1 | - |
| 32 | - | MX105122115MT | KEIS DE SILVIN LH | 1 | - |
| 33 | - | MX105122119MT | BASE DE SILVIN 1 | 1 | - |
| 34 | - | MX105122120MT | BASE DE SILVIN 2 | 1 | - |
| 35 | - | MX105122121MT | BASE DE SILVIN | 1 | - |
| 36 | - | MX105122124MT | FILTRO DE GASOLINA | 1 | - |
| 37 | - | MXR200L09-37MT | PROTECTOR DE PUÑO | 2 | - |
| | | | | | |
| | | | | | |
| | | | | | |
| | | | | | |
| | | | | | |
| | | | | | |
| | | | | | |
| | | | | | |
| | | | | | |
| | | | | | |
| | | | | | |
| | | | | | |
| | | | | | |
| | | | | | |
| | | | | | |
| | | | | | |
| | | | | | |
| | | | | | |
| | | | | | |
| | | | | | |



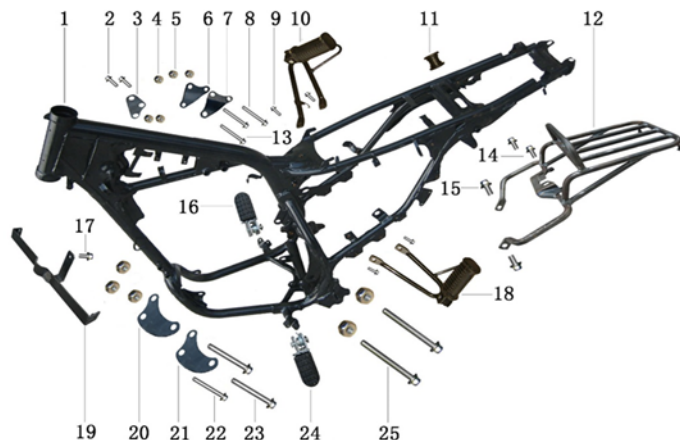
| NO. | ALTERNO | CÓDIGO | DESCRIPCION | CANT. | REF. |
|-----|---------|-----------------|-------------------------------|-------|------|
| 1 | - | MX041899677MT | MANGO DE GASOLINA | 1 | - |
| 2 | - | MX04182257MT | BASE CABLE DE GASOLINA | 1 | - |
| 3 | - | MX07152258MT | SWITCH RH | 1 | - |
| 4 | - | MX04182259MT | ESPEJO RH | 1 | - |
| 5 | - | MX04182260MT | TIMON | 1 | - |
| 6 | - | MX041822122MT | TORNILLO BASE DE TIMON | 4 | - |
| 7 | - | MX04182261MT | ESPEJO LH | 1 | - |
| 8 | - | MX07152262MT | MANECILLA CLUTCH COMPLETA | 1 | - |
| 9 | - | MX07152263MT | SWITCH LH | 1 | - |
| 10 | - | MX041899682MT | MANGO LH | 1 | - |
| 11 | - | MX041899683MT | ABRAZADERA | 1 | - |
| 12 | - | MX041899684MT | ABRAZADERA | 1 | - |
| 13 | - | MX04182264MT | BASE T DE BARRAS | 1 | - |
| 14 | - | MX04182265MT | T DE BARRAS | 1 | - |
| 15 | - | MX02322271MT | TUERCA DE BARRAS | 1 | - |
| 16 | - | MXR200L10-16M T | TUERCA DE BARRAS | 1 | - |
| 17 | - | MX02322269MT | GUARDAPOLVO D BARRAS SUPERIOR | 1 | - |
| 18 | - | MX041922741MT | GUARDAPOLVO D BARRAS | 2 | - |
| 19 | - | MX041822116MT | CUNA SUPERIOR | 1 | - |
| 20 | - | MX041822111MT | KIT DE CUNAS | 2 | - |
| 21 | - | MX023522138MT | TORNILLO | 2 | - |
| 22 | - | MX03472266MT | CABLE DE GASOLINA | 1 | - |
| 23 | - | MX02322267MT | CABLE DE ASPIROMETRO | 1 | - |
| 24 | - | MX02322268MT | CABLE DE CLUTCH | 1 | - |
| 25 | - | MX04192274MT | SISTEMA FRENO DELANTERO | 1 | - |
| 26 | - | MX0237141418M T | REFLECTOR | 2 | - |
| 27 | - | MX023222118MT | GUIA DE CABLE | 1 | - |
| 28 | - | MX023222119MT | GUIA DE CABLE | 1 | - |
| 29 | - | MX054914916MT | TORNILLO | 2 | - |
| 30 | - | MX06282269MT | PASTILLAS DELANTERAS | 1 | - |
| 31 | - | MX04192270MT | BARRA RH | 1 | - |

FIG. 11

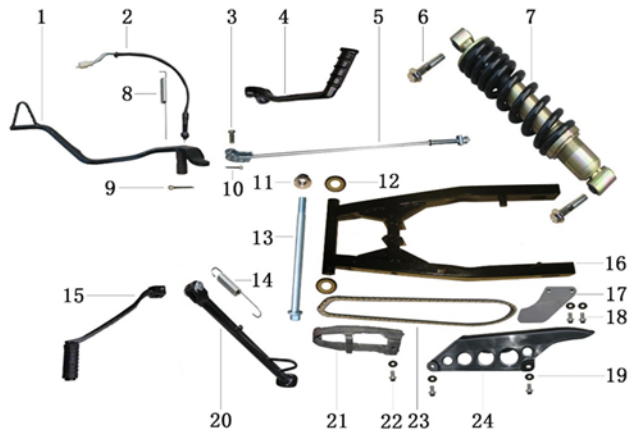
TREN DELANTERO Y SISTEMA ELECTRICO



| NO. | ALTERNO | CÓDIGO | DESCRIPCION | CANT. | REF. |
|-----|---------|-----------------|-----------------------------|-------|------|
| 32 | - | MX04192271MT | BARRA LH | 1 | - |
| 33 | - | MX054914917MT | GUIA DE CABLE | 2 | - |
| 34 | - | MX04192275MT | M ORDAZA FRENO DELANTERO | 1 | - |
| 35 | - | MX04192274-02 | BOMBA DE FRENO DELANTERO | 1 | - |
| 36 | - | MX04192274-03MT | MANGUERA DE FRENO DELANTERA | 1 | - |
| 37 | - | MX023522125MT | TORNILLO M6x16 | 7 | - |
| 38 | - | MX07162280MT | BASE DE BATERIA | 1 | - |
| 39 | - | MX07162272MT | RELAY | 1 | - |
| 40 | - | MX071611527MT | BOBINA DE ALTA CON CAPUCHON | 1 | - |
| 41 | - | MX071611536MT | FLASHER DE PIDEVIAS | 1 | - |
| 42 | - | MX054999928MT | TORNILLO M6x12 | 1 | - |
| 43 | - | MX07162275MT | BOCINA | 1 | - |
| 44 | - | MX07162276MT | HARNES | 1 | - |
| 45 | - | MX07162277MT | RECTIFICADOR | 1 | - |
| 46 | - | MX07162278MT | CDI | 1 | - |
| 47 | - | MX07162279MT | HULE DE BATERIA | 1 | - |
| 48 | - | MX07162281MT | BATERIA | 1 | - |
| | | | | | - |
| | | | | | - |
| | | | | | |
| | | | | | |
| | | | | | |
| | | | | | |
| | | | | | |
| | | | | | |
| | | | | | |
| | | | | | |
| | | | | | |
| | | | | | |
| | | | | | |

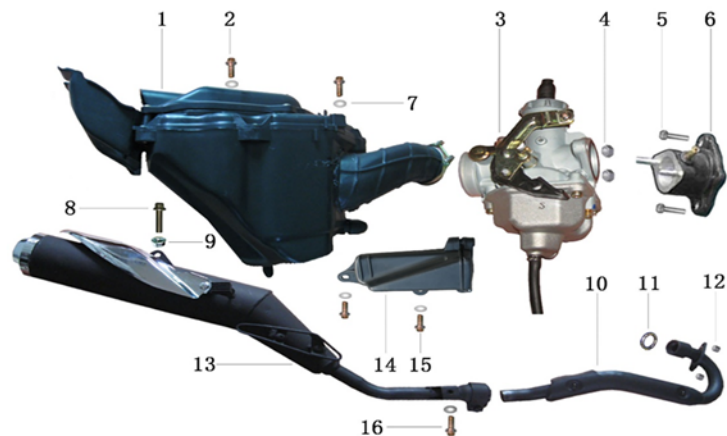


| NO. | ALTERNO | CÓDIGO | DESCRIPCION | CANT. | REF. |
|-----|---------|-----------------|-------------------------------|-------|------|
| 1 | - | MXR200L13-01M T | CHASIS COMPLETO | 1 | - |
| 2 | - | MXR200L13-02M T | TORNILLO M8x16 | 2 | - |
| 3 | - | MX02352291M T | CARGADOR DE MOTOR | 2 | - |
| 4 | - | MX023522136M T | TUERCA M8 | 6 | - |
| 5 | - | MX0914141066M T | TUERCA M10 | 4 | - |
| 6 | - | MX02352289M T | CARGADOR DE MOTOR SUPERIOR RH | 1 | - |
| 7 | - | MX02352290M T | CARGADOR DE MOTOR SUPERIOR LH | 1 | - |
| 8 | - | MX0549992309M T | TORNILLO M10x60 | 2 | - |
| 9 | - | MXR200L13-09M T | TORNILLO M8x25 | 4 | - |
| 10 | - | MX02402279M T | TACO COMPLETO RH | 1 | - |
| 11 | - | MX0549992310M T | HULES | 1 | - |
| 12 | - | MX02352280M T | PARRILLA TRASERA | 1 | - |
| 13 | - | MXR200L13-13M T | TORNILLO M8x65 | 1 | - |
| 14 | - | MXR200L13-14M T | TORNILLO M6x30 | 2 | - |
| 15 | - | MXR200L13-15M T | TORNILLO M10x 1.25x 50 | 2 | - |
| 16 | - | MX02352281M T | TACO DEL RH | 1 | - |
| 17 | - | MXR200L13-17M T | TORNILLO M6x20 | 2 | - |
| 18 | - | MX02352282M T | TACO DEL LH | 1 | - |
| 19 | - | MX02352284M T | BASE CENTRAL | 1 | - |
| 20 | - | MX02352287M T | CARGADOR FR RH | 1 | - |
| 21 | - | MX02352288M T | CARGADOR FR LH | 1 | - |
| 22 | - | MX023522122M T | TORNILLO M8x75 | 2 | - |
| 23 | - | MX023522123M T | TORNILLO M8x90 | 2 | - |
| 24 | - | MX02352283M T | TACO COMPLETO LH | 1 | - |
| 25 | - | MX023522128M T | TORNILLO M10x 1.25x 110 | 2 | - |
| | | | | | |
| | | | | | |
| | | | | | |
| | | | | | |
| | | | | | |



| NO. | ALTERNO | CÓDIGO | DESCRIPCION | CANT. | REF. |
|-----|---------|-----------------|----------------------------|-------|------|
| 1 | - | MX02382284MT | PATA DE FRENO | 1 | - |
| 2 | - | MX06282285MT | SWITCH DE STOP | 1 | - |
| 3 | - | MX023522142MT | PIN VARILLA DE FRENO | 1 | - |
| 4 | - | MX02402286MT | PATA DE ARRANQUE | 1 | - |
| 5 | - | MX02402287MT | VARILLA DE FRENO | 1 | - |
| 6 | - | MX02402288MT | TORNILLO DE MONOSHOCK | 1 | - |
| 7 | - | MX08232289MT | MONOSHOCK | 2 | - |
| 8 | - | MX023522144MT | RESORTE PATA DE FRENO | 1 | - |
| 9 | - | MXR200L14-09M T | PIN 3x 25 | 1 | - |
| 10 | - | MXR200L14-10M T | PIN 2x 20 | 1 | - |
| 11 | - | MXR200L14-11M T | TUERCA M12x 1.5 | 1 | - |
| 12 | - | MX04202290MT | GUARDA POLVO EJE DE MULETA | 1 | - |
| 13 | - | MX0346112290M T | EJE DE MULETA | 1 | - |
| 14 | - | MX023522145MT | RESORTE PATA LATERAL | 1 | - |
| 15 | - | MX04202292MT | PATA DE VELOCIDADES | 1 | - |
| 16 | - | MX08222293MT | MULETA | 1 | - |
| 17 | - | MX08222294MT | BASE DE MULETA | 1 | - |
| 18 | - | MXR200L14-MT | TORNILLO M6x16 | 2 | - |
| 19 | - | MX0549991178M T | ARANDELA M 6 | 5 | - |
| 20 | - | MX02382295MT | PATA LATERAL | 1 | - |
| 21 | - | MX0346111453M T | BUFFER DE CADENA | 1 | - |
| 22 | - | MXR200L14-22M T | TORNILLO M6x12 | 3 | - |
| 23 | - | MX08222297MT | CADENA DE TRACCION | 1 | - |
| 24 | - | MX09142298MT | CUBRECADENA | 1 | - |
| | | | | | |
| | | | | | |
| | | | | | |
| | | | | | |
| | | | | | |
| | | | | | |
| | | | | | |
| | | | | | |
| | | | | | |

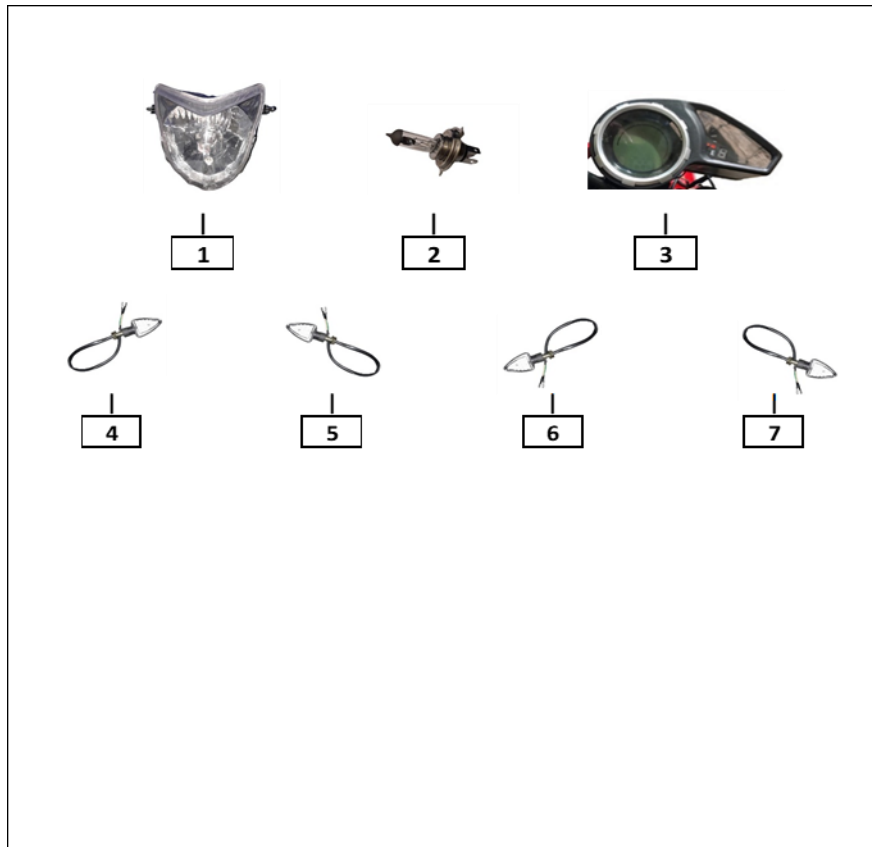
FILTRO DE AIRE, CARBURADOR Y ESCAPE



| NO. | ALTERNO | CÓDIGO | DESCRIPCION | CANT. | REF. |
|-----|---------|-----------------|-------------------------|-------|------|
| 1 | - | MX105122123MT | FILTRO AIRE COMPLETO | 1 | - |
| 2 | - | MX105122122MT | TORNILLO FILTRO DE AIRE | 2 | - |
| 3 | - | MX01082299MT | CARBURADOR | 1 | - |
| 4 | - | MX023522135MT | TUERCA M6 | 2 | - |
| 5 | - | MX023522126MT | TORNILLO M6x25 | 2 | - |
| 6 | - | MX010822100MT | MANIFULL | 1 | - |
| 7 | - | MX0549991178M T | ARANDELA M 6 | 4 | - |
| 8 | - | MX023522129MT | M 10x1.25x50 | 1 | - |
| 9 | - | MX023522133MT | TUERCA M 10x 1.25 | 1 | - |
| 10 | - | MX034622101MT | CURVA DE ESCAPE | 1 | - |
| 11 | - | MX034510454MT | ARANDELA ESCAPE | 1 | - |
| 12 | - | MX023522137MT | TUERCA M6 | 2 | - |
| 13 | - | MX034622102MT | ESCAPE | 1 | - |
| 14 | - | MX034622103MT | PORTAHERRAMIENTAS | 1 | - |
| 15 | - | MXR200L15-15M T | TORNILLO M6x16 | 2 | - |
| 16 | - | MX034622121MT | TORNILLO M8x20 | 1 | - |
| | | | | | |
| | | | | | |
| | | | | | |
| | | | | | |
| | | | | | |
| | | | | | |
| | | | | | |
| | | | | | |
| | | | | | |
| | | | | | |
| | | | | | |
| | | | | | |
| | | | | | |



| NO. | ALTERNO | CÓDIGO | DESCRIPCION | CANT. | REF. |
|-----|---------|-----------------|---------------------------|-------|------|
| 1 | - | MX010522116MT | EJE DE RUEDA TRASERA | 1 | - |
| 2 | - | MX010522106MT | TENSOR DE CADENA LH | 1 | - |
| 3 | - | MXR200L16-03M T | CLIP DE AJUSTE DE CADENA | 1 | - |
| 4 | - | MXR200L16-04M T | TORNILLO | 6 | - |
| 5 | - | MXR200L16-05M T | LLANTA TRASERA | 1 | - |
| 6 | - | MXR200L16-06M T | TUBO LLANTA TRASERA | 1 | - |
| 7 | - | MXR200L16-07M T | HULE PROTECTOR DE ARO | 1 | - |
| 8 | - | MXR200L16-08M T | TUERCA M8 | 6 | - |
| 9 | - | MX062822108MT | ARO TRASERO COMPLETO | 1 | - |
| 10 | - | MX091322109MT | ESPROCKET TRASERO | 1 | - |
| 11 | - | MXR200L16-11M T | TORNILLO M8x25 | 6 | - |
| 12 | - | MX091322110MT | BUSHING ESPROCKET TRASERO | 1 | - |
| 13 | - | MX010522106MT | TENSOR DE CADENA LH | 1 | - |
| 14 | - | MXR200L16-14M T | TUERCA M 16x 1.5 | 1 | - |
| 15 | - | MX023522134MT | TUERCA EJE DELANTERO | 1 | - |
| 16 | - | MX0913221010M T | TORNILLO DE DISCO | 6 | - |
| 17 | - | MX062822104MT | DISCO DE FRENO DELANTERO | 1 | - |
| 18 | - | MX082522103MT | ARO DELANTERO COMPLETO | 1 | - |
| 19 | - | MXR200L16-19M T | HULE PROTECTOR DE ARO | 1 | - |
| 20 | - | MXR200L16-20M T | TUBO DELANTERO | 1 | - |
| 21 | - | MXR200L16-21M T | LLANTA DELANTERA | 1 | - |
| 22 | - | MX082522112MT | CAJA ASPIROMETRO | 1 | - |
| 23 | - | MX010522116MT | EJE DE RUEDA TRASERA | 1 | - |
| 24 | - | MXR200L16-24M T | DISCO DE FRENO TRASERO | 1 | - |
| 25 | - | MXR200L16-25M T | LLANTA DELANTERA COMPLETA | 1 | - |
| 26 | - | MXR200L17-01M T | BOLSA HERRAMIENTAS | 1 | - |
| 27 | - | MX1253122300M T | LLAVE DE CANDELA | 1 | - |
| 28 | - | MX1253122296M T | ALICATE | 1 | - |
| 29 | - | MX1253122302M T | LLAVE 12 14 | 1 | - |
| 30 | - | MX1253122301M T | LLAVE 8 10 | 1 | - |
| 31 | - | MX125312915M T | DESARMADOR | 1 | - |



| NO. | ALTERNO | CÓDIGO | DESCRIPCION | CANT. | REF. |
|-----|---------|----------------|---------------------|-------|---------------|
| 1 | - | MXR200L18-01MT | SILVIN | 1 | MX02292228MT |
| 2 | - | MXR200L18-02MT | BOMBILLA DE SILVIN | 1 | MX062708280MT |
| 3 | - | MXR200L18-03MT | ASPIROMETRO DIGITAL | 1 | MX02322234MT |
| 4 | - | MXR200L18-04MT | PIDEVIA S LED RF RH | 1 | MX02402229MT |
| 5 | - | MXR200L18-05MT | PIDEVIA S LED RF LH | 1 | MX02402233MT |
| 6 | - | MXR200L18-06MT | PIDEVIA S LED RR RH | 1 | MX 02402236MT |
| 7 | - | MXR200L18-07MT | PIDEVIA S LED RR LH | 1 | MX 02402237MT |
| 8 | - | | | | |
| 9 | - | | | | |
| 10 | - | | | | |
| 11 | - | | | | |
| 12 | - | | | | |
| 13 | - | | | | |
| 14 | - | | | | |
| 15 | - | | | | |
| 16 | - | | | | |
| 17 | - | | | | |
| 18 | - | | | | |
| 19 | - | | | | |
| 20 | - | | | | |
| 21 | - | | | | |
| 22 | - | | | | |
| 23 | - | | | | |
| 24 | - | | | | |
| 25 | - | | | | |
| 26 | - | | | | |
| 27 | - | | | | |
| 28 | - | | | | |
| 29 | - | | | | |
| 30 | - | | | | |
| 31 | - | | | | |



MASESA

M o t o s d e t r a b a j o

PBX: 2324-4400

www.masesa.com |    